



CARNAHAN · PROCTOR · CROSS, INC.

CONSULTING ENGINEERS · SURVEYORS · PLANNERS

6101 WEST ATLANTIC BOULEVARD, MARGATE, FLORIDA 33063
PHONE: 954-972-3959 FAX: 954-972-4178

JULY 2002

020103

DCW

RIO POCO P.U.D.

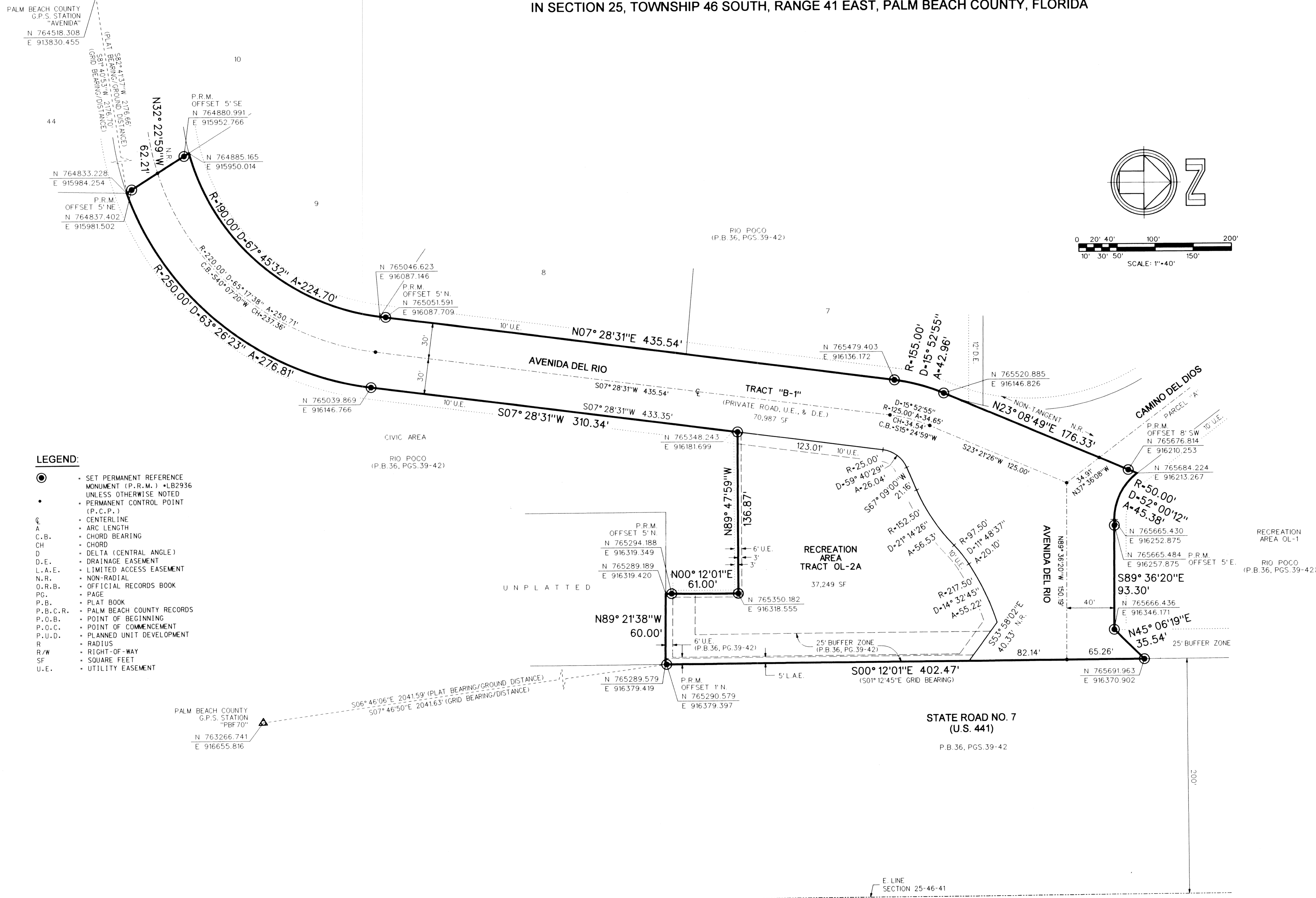
RIO POCO REPLAT

A REPLAT OF RECREATION AREA OL-2 AND PORTION OF TRACT "B",
"RIO POCO" (P.B. 36, PGS.39-42, P.B.C.R.)

IN SECTION 25, TOWNSHIP 46 SOUTH, RANGE 41 EAST, PALM BEACH COUNTY, FLORIDA

139

SHEET 2 OF 2



LEGEND:

- SET PERMANENT REFERENCE MONUMENT (P.R.M.) • LB2936 UNLESS OTHERWISE NOTED
- PERMANENT CONTROL POINT (P.C.P.)
- ☉ CENTERLINE
- A ARC LENGTH
- C.B. CHORD BEARING
- CH CHORD
- D DELTA (CENTRAL ANGLE)
- D.E. DRAINAGE EASEMENT
- L.A.E. LIMITED ACCESS EASEMENT
- N.R. NON-RADIAL
- O.R.B. OFFICIAL RECORDS BOOK
- PG. PAGE
- P.B. PLAT BOOK
- P.B.C.R. PALM BEACH COUNTY RECORDS
- P.O.B. POINT OF BEGINNING
- P.O.C. POINT OF COMMENCEMENT
- P.U.D. PLANNED UNIT DEVELOPMENT
- R RADIUS
- R/W RIGHT-OF-WAY
- SF SQUARE FEET
- U.E. UTILITY EASEMENT

SUBDIVISION Rio POCO REPLAT
 BOOK 99
 FLOOD ZONE B
 QUAD # 67
 SE
 TAZ 764
 PUD NAME

FILE: s:\020103\020103\020103.dgn
 DATE: 24-OCT-02 15:56